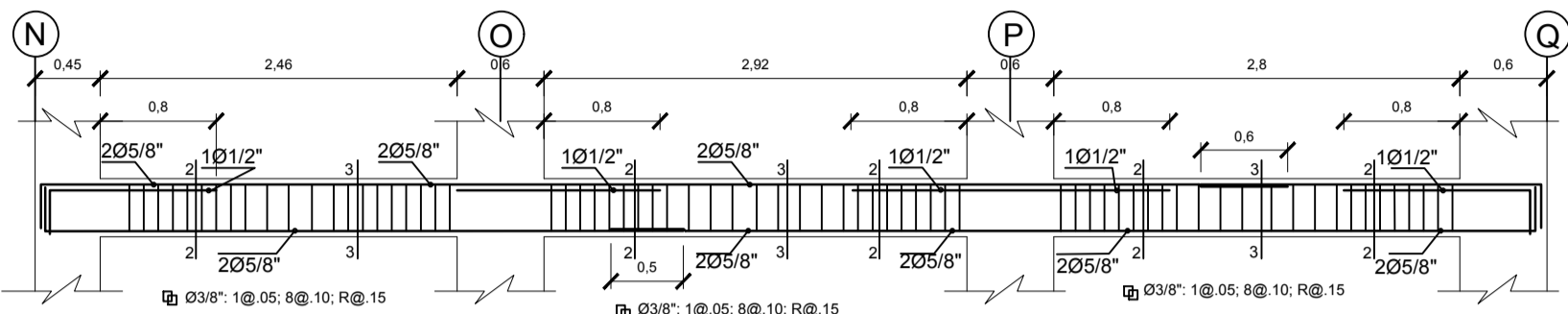
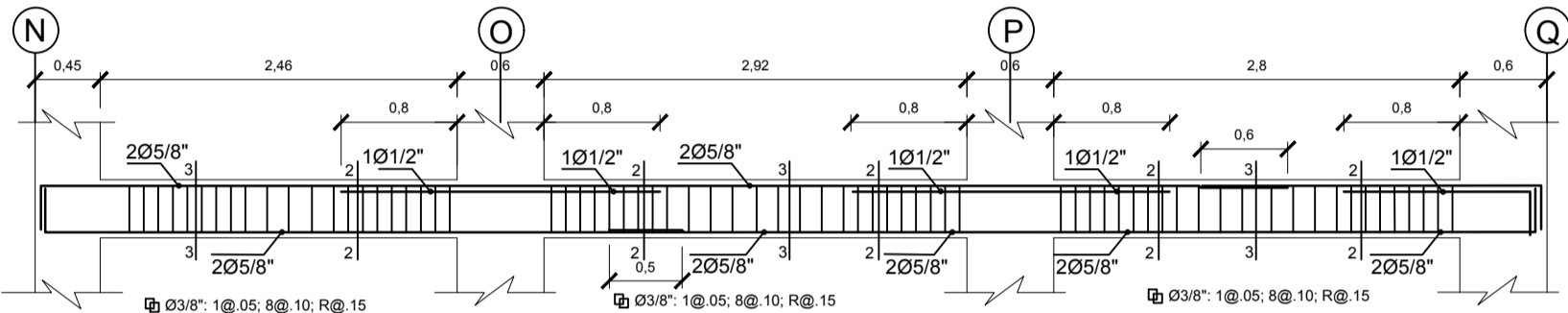


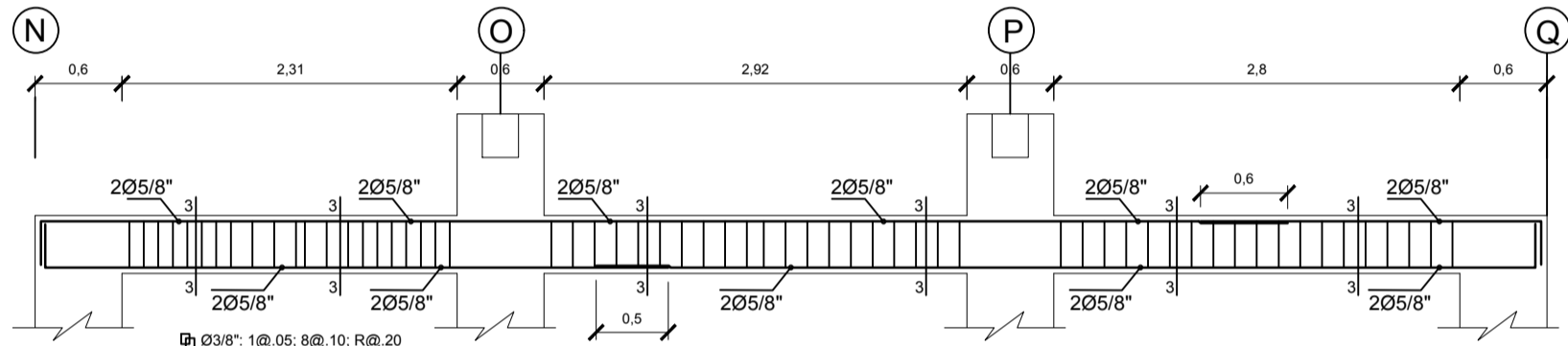
DETALLE DE VIGA - EJE 10 - 1° PISO
Escala 1/50



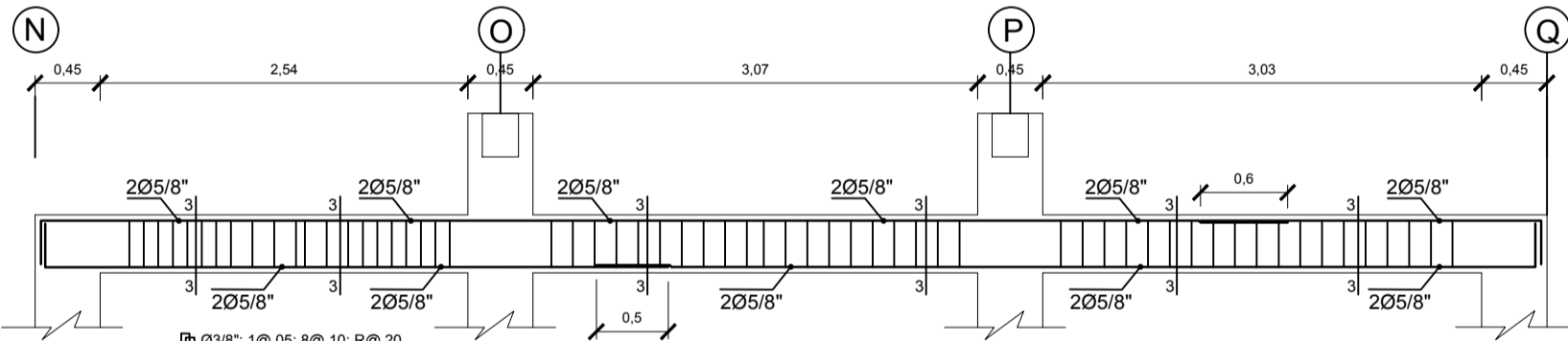
DETALLE DE VIGA - EJE 11 - 1° PISO
Escala 1/50



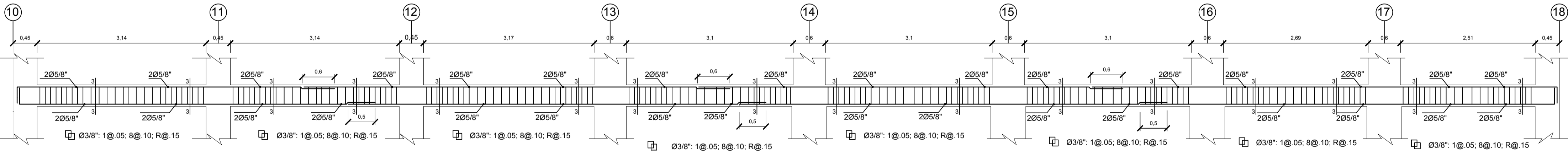
DETALLE DE VIGA - EJE 12 - 1° PISO
Escala 1/50



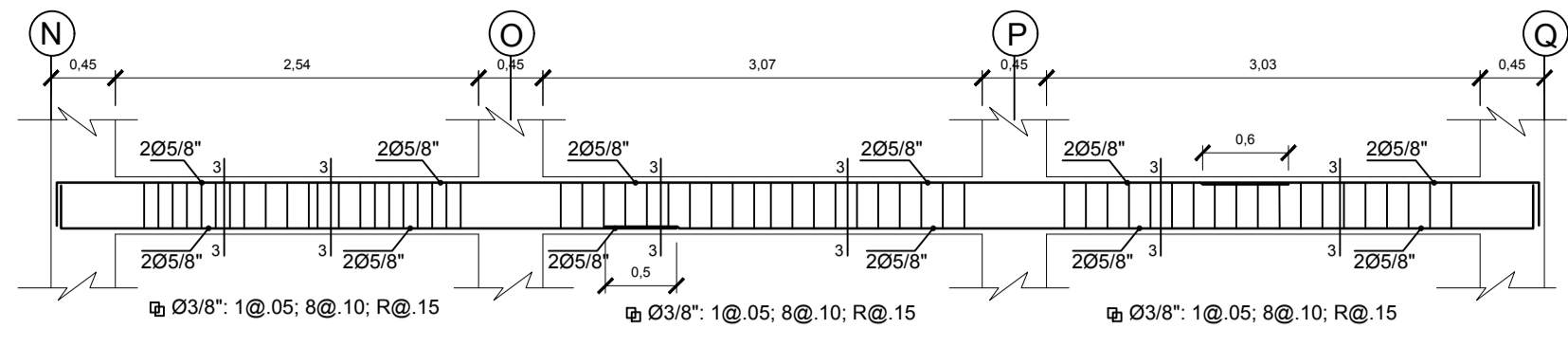
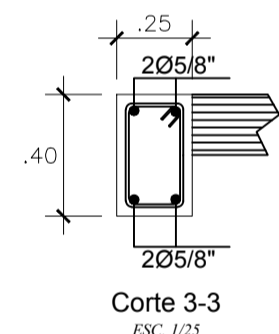
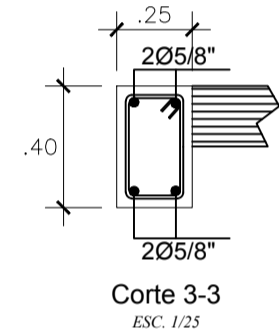
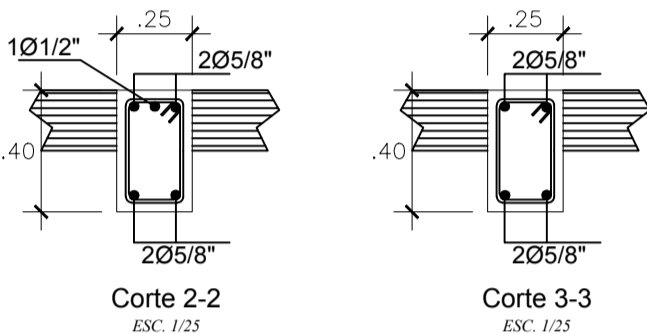
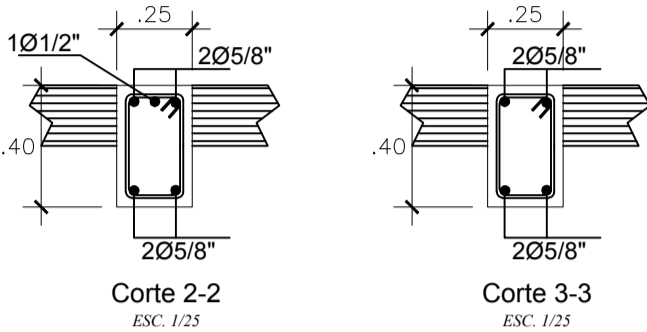
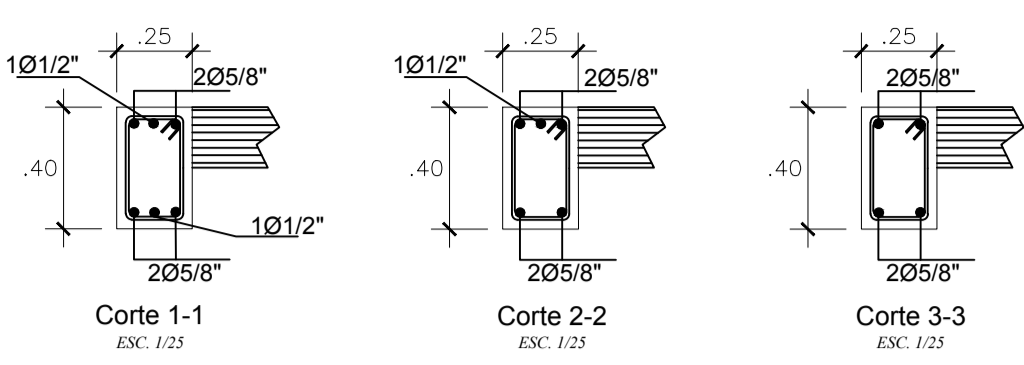
DETALLE DE VIGA - EJE 10 - 2° PISO
Escala 1/50



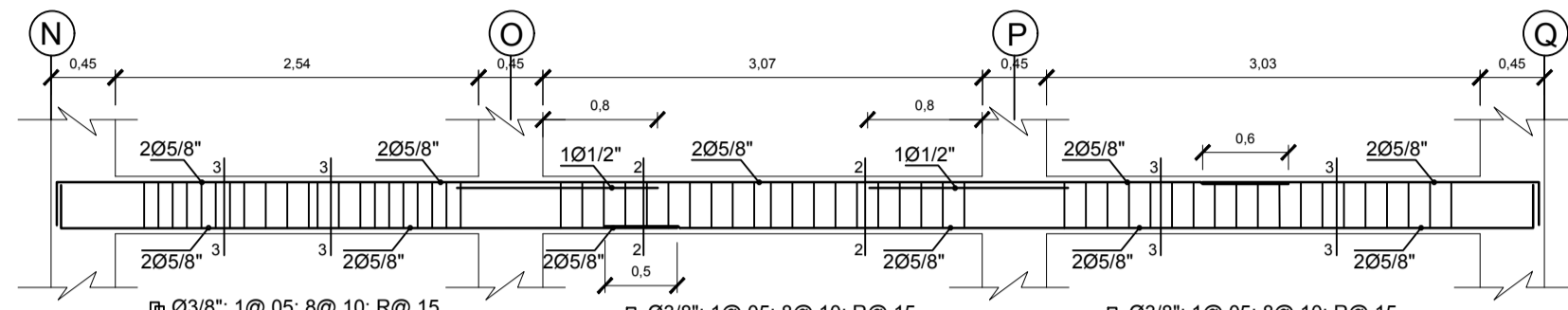
DETALLE DE VIGA - EJE 13,14,15,16 y17- 2° PISO
Escala 1/50



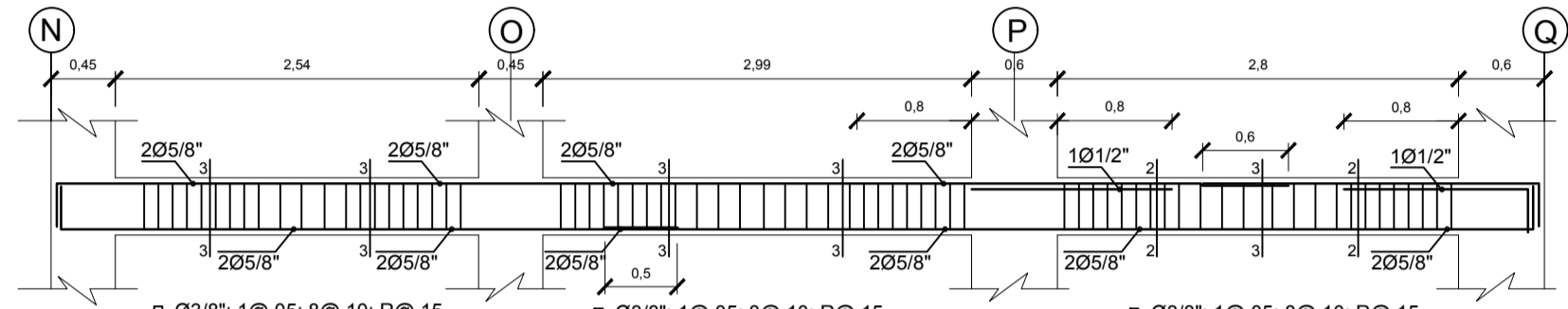
DETALLE DE VIGA - EJE Q - 1° PISO
ESC. 1/30



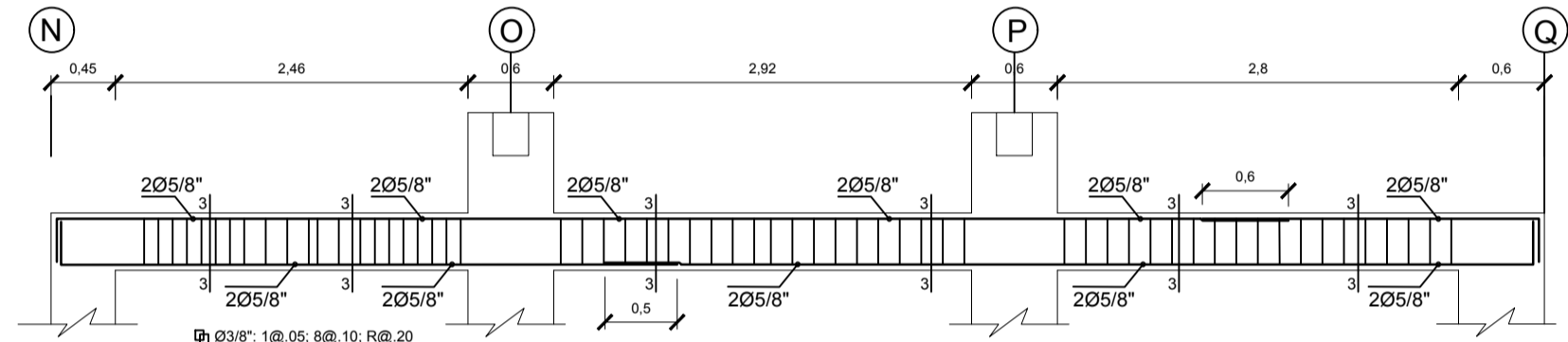
DETALLE DE VIGA - EJE 13,14,15 y 17 - 1° PISO
Escala 1/50



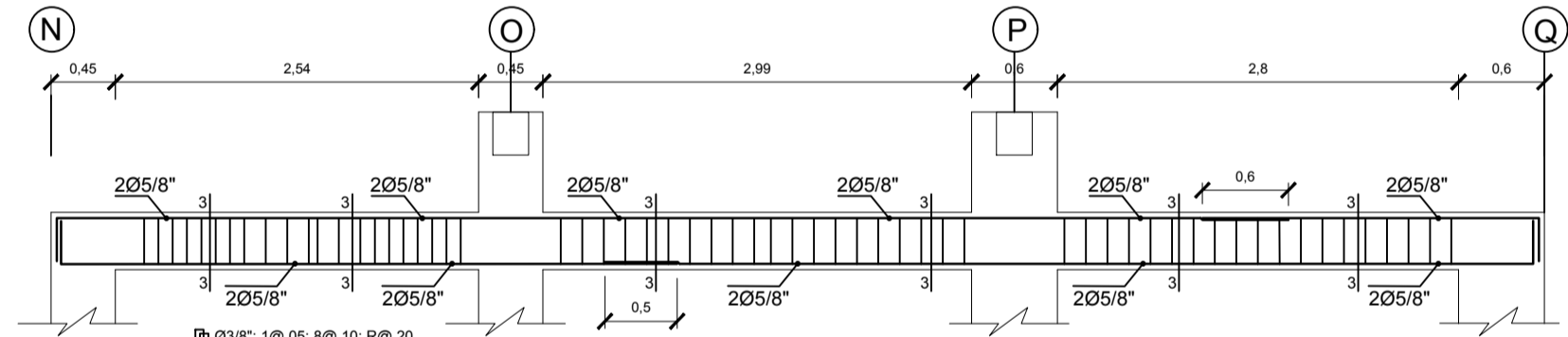
DETALLE DE VIGA - EJE 16 - 1° PISO
Escala 1/50



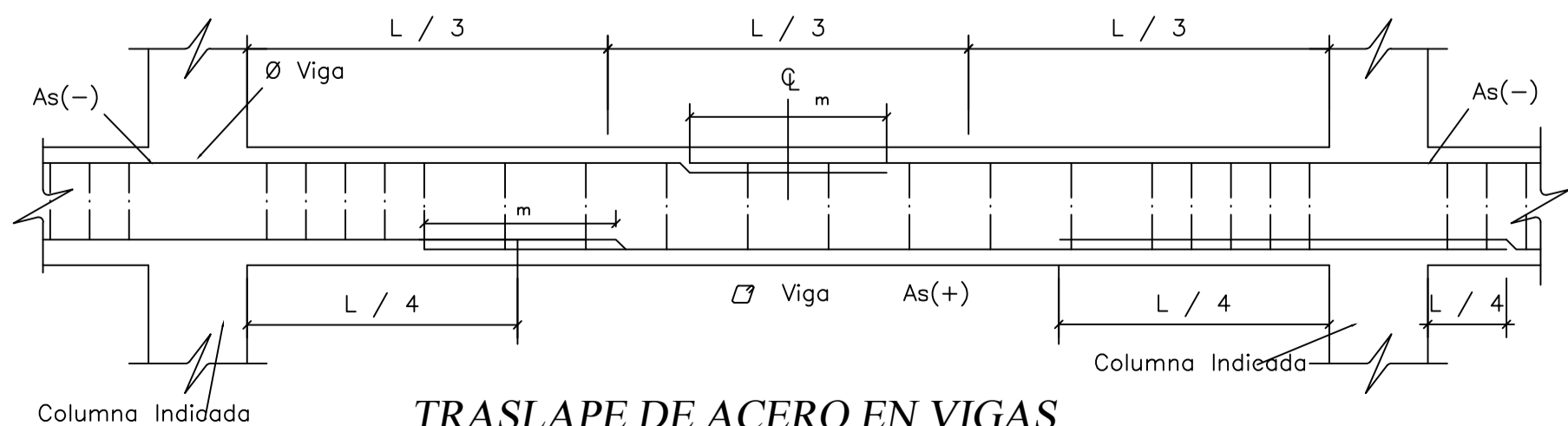
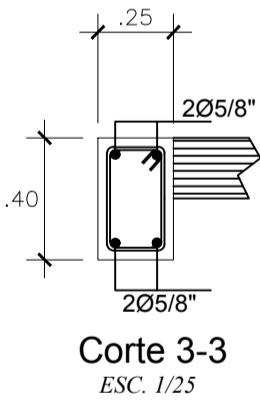
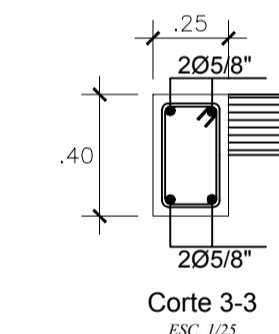
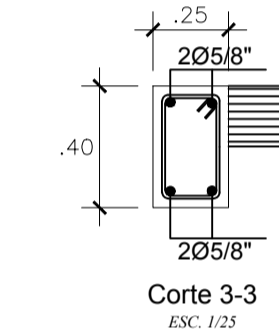
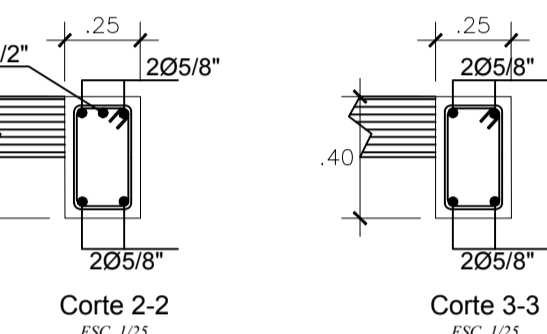
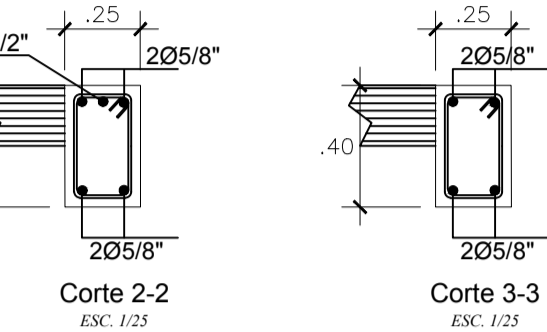
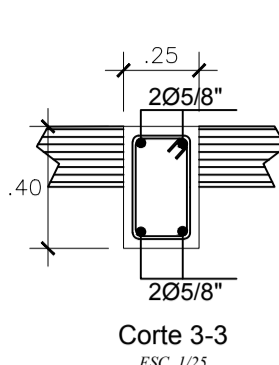
DETALLE DE VIGA - EJE 18 - 1° PISO
Escala 1/50



DETALLE DE VIGA - EJE 11 y 12- 2° PISO
Escala 1/50



DETALLE DE VIGA - EJE 18 - 2° PISO
Escala 1/50



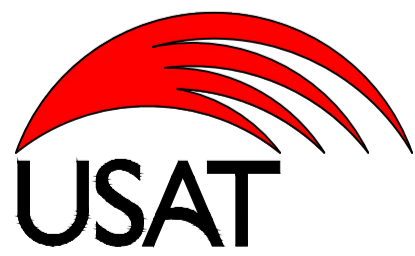
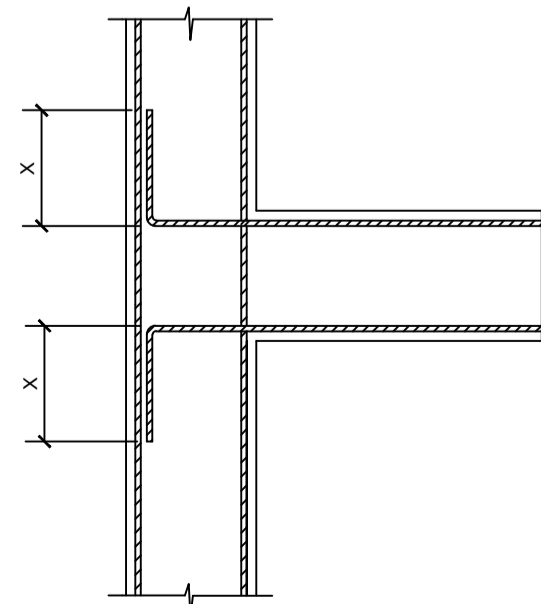
TRASLAPE DE ACERO EN VIGAS
ESC.: 1/25

VALORES DE "m"		Øs	Sup.	Inf.
		3/8"	0.45	0.40
		1/2"	0.50	0.40
		5/8"	0.60	0.50
		3/4"	0.75	0.60

NOTA: ZONAS EN LAS QUE NO SE EFECTUAN TRASLAPES
1.-ARMADURA INFERIOR EN EL TERCIO CENTRAL.
2.-ARMADURA SUPERIOR EN APOYOS CONTINUOS.
3.-ARMADURA SUPERIOR EN VOLADIZOS.

Ø	X
3/8"	0.20
1/2"	0.25
5/8"	0.30
3/4"	0.35

LONGITUDES DE ANCLAJES



Universidad Católica
Santo Toribio de
Mogrovejo

FACULTAD DE INGENIERÍA

Escuela Profesional de Ingeniería Civil Ambiental

PROYECTO:
EXPEDIENTE TÉCNICO PARA EL MERCADO DE ABASTOS EN
EL SECTOR DENOMINADO PAMPA EL TORO DEL DISTRITO
DE TUMÁN, PROVINCIA CHICLAYO, DEPARTAMENTO
LAMBAYEQUE 2018

JURADO:
Presidente: Ing. TAFUR JIMENEZ, Carlos Rafael
Secretario: Ing. LUNA MERA, Juan Ignacio
Vocal: Ing. CARRANZA CIEZA, Segundo Guillermo

TESISTA: PISCOYA MONTALVAN, CHRISTIAN JOSE MANUEL

PLANO: DESARROLLO DE VIGAS
BLOQUE 2 Y 4

DIBUJO:
P.M.C.J.M.

LAMINA:

FECHA:
AGOSTO 2021

ESCALA:
INDICADA

E-11